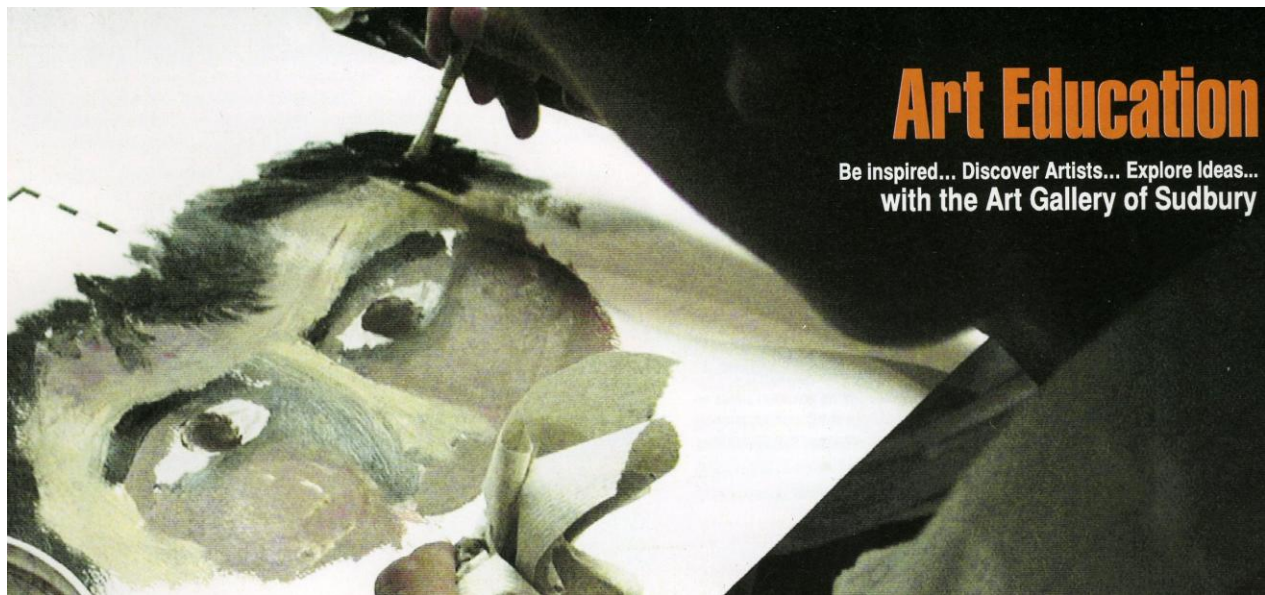


**Have your School  
Participate in  
Art on the Go  
Primary School**



Art on the Go will provide discussion-based presentations and hands on art workshops, which corresponds with the Ontario Curriculum. These discussions foster an appreciation and understanding for visual art and create a forum for a personal exchange of ideas. Programs are adapted for grades J.K to 8, and are available in both French and English.

**This program gives students and teachers the opportunity to:**

- To learn about artists, their techniques and inspirations.
- To encourage alternative ways of thinking, working and expressing.
- To make art.

**Custom programs and visits in can be tailored to suit the needs of your school or organization. Specialty programs in clay and animation are available for 2009/2010 Please call to inquire at 674-3271 extension 224.**

## Curriculum connected workshops

(75 minutes per session)

Each session is available in French & English and adapted to a variety of grade levels. A community artist or Gallery educator will bring works of art from the Gallery's extensive permanent collection to open up discussion and dialogue regarding the artist, the style and the materials used. All artist quality materials will be supplied in each workshop.



**Landscapes: Grade J.K to 8**

**Curriculum link: Language Art / Art**

Includes 2 works of art to discuss and view from the A.G.S Permanent Collection.

Students will explore a variety of watercolour techniques and apply them to a landscape painting.



**Ancient Civilizations: Grades 4 to 6**

**Curriculum link: Social Studies / Art / Language Art**

Have your students become a stone mason or sculptor from ancient times. Discover relief carving techniques in Plaster of Paris while exploring the ancient civilization of Egypt.



**First Nations, Northern Discovery: Grades 3 to 8**

**Curriculum link: Social Studies / Art / Native Studies**

Includes two original prints to view and discuss from the A.G.S Permanent Collection.

Students will learn to cut and print a lino block carving in the same style used by the Inuit artists when they created stone cut engravings.



**Canadian Identity: Grades 3 to 6**

**Curriculum link: Language Arts / Social studies / Art**

Who or what makes up a community? Students will investigate their own family heritage and learn about the heritage of others through a unique mask making workshop using plaster bandage and mixed media materials.



### **Fossils: Grades J.K to 5**

#### **Curriculum Link: Social Studies / Art**

Take home your very own fossil! Students will create textures, and impressions in clay then learn to cast them in Plaster of Paris.

### **Meet the Group of Seven: Grades 4 to 8**

#### **Curriculum Link: Art / Language Arts / Social Studies**

Students will get a general introduction to the group of seven and their artwork. Students will learn to observe the land and discover how each one of us interprets it differently through the creation of a landscape painting.

### **Special Needs:**

The Art Gallery of Sudbury has been developing programs through our experience in workshops with the **Children's Treatment Center and ICAN, Independent Living Center** that are suitable for students with special needs and disabilities.

We strive to spark creativity and imagination through thinking and problem solving in the making of visual art. Children ages 5 to 18 yrs are encouraged to use the visual arts as a springboard for developing skills, taking risks and working together.

This year we offer 2 workshops which target **physical control, coordination, identification and understanding of feelings and sensory integration.**

### **Expressive Drawing & Painting :**

Students will experiment with a variety of watercolour techniques and learn to establish a voice while painting to classical music.

### **Magical Tiles:**

Students will enjoy this very tactile workshop working with clay to create a relief tile. They will explore design by carving, modeling and making impressions with various objects before pouring a cast in plaster.



## **Outreach Booking Procedures and Information:**

### **To Book a program:**

Call the Art Gallery of Sudbury's Education Manager - Nancy Gareh -Coulombe at 674-3271 ex. 224 or email [ngareh@artsudbury.org](mailto:ngareh@artsudbury.org) Or visit us at 251 John St. Sudbury, ON

For the 2009/2010 school year Art on the Go, Gallery Tours and Workshops can be booked by phone Monday to Friday from 9:00am to 5:00pm beginning September, 2009 and will be available until the middle of June 2010

### **Costs:**

**For the 2009 / 2010 year we are pleased to make our program available to you at the following costs:**

<b>Grade</b>	<b>Art on the Go Curriculum Connected Workshop</b> (based on 30 students)	<b>Presentation Only</b> (based on approx. 60 students or 2 classes)	<b>Special Needs</b> (Minimum 8 students/ Maximum 12)
<b>J.K - 8</b>	<b>\$150.00</b>	<b>\$40.00</b>	<b>\$10.00 per student</b>
<b>9-12</b>	<b>\$150.00</b>	<b>\$40.00</b>	<b>\$10.00 per student</b>

### **Please Note:**

Each student over and above the 30 person minimum will be charged \$ 8.00 per student for workshops.

### **Teacher / Coordinator Presence:**

The artist facilitating the workshop will lead the sessions, however, it is a requirement of the Rainbow District School Board, the Sudbury Catholic District School Board, the Conseil Scolaire du district du Grand Nord de l'Ontario and Le Conseil Scolaire du district Catholique du Nouvel- Ontario that the regular classroom teacher remain with the group for the duration of the entire program. The Art on the Go program is meant to be a learning experience for both students and teachers. It is also an issue of liability. The artists/ facilitators are guests you have invited to your classroom / center and should be treated as such. Classroom management and control remain the responsibility of the classroom teacher. In the event that a classroom situation becomes unmanageable, the artist reserves the right to suspend or cancel the program with the permission of the Education Manager.

**Rescheduling:**

At all times the Art Gallery will work to honor confirmed program bookings. However, some modifications in scheduling and delivery may be necessary in the event of illness, conflicts, cancellations, weather or closures.

**Cancellations:**

Any cancellations or no shows of a confirmed workshop by a teacher or school requires a minimum of 48 hr. notice to the Education Manager either by phone at 674-3271 ex. 224, by fax at 674-3065 or by email at [ngareh@artsudbury.org](mailto:ngareh@artsudbury.org). Failure to provide such notice will result in a \$50.00 charge to the school for the intended program. The Art Gallery of Sudbury also reserves the right to suspend or cancel a programme if circumstances make it necessary.

**Evaluation:**

An evaluation form for all programmes will be provided on the day of the program. Your feedback is appreciated and helps to ensure our ability to deliver relevant, high quality programmes. Please fill out the evaluation at the completion of a workshop and return it to the Art Gallery of Sudbury either by fax at 674-3065 or by mail to The Art Gallery of Sudbury, 251 John St. Sudbury, ON P3E 1P9.

**Payment:** Payment can be made at the time of program delivery or an invoice will be generated by the Art Gallery of Sudbury and sent to the school administrator. Full payment is due within 30 days of the start of the first session.

The Art Gallery of Sudbury is committed to developing understanding, knowledge and appreciation of the visual arts through its collection, exhibition, preservation, and outreach activities. Incorporated in 1997 as the successor organization to the Laurentian University Museum and Art Center, the Art Gallery of Sudbury is a multi-faceted venue that showcases work in all media created by local, national and international artists. Its artistic direction and strategy addresses a breadth of creative concerns and reflects a range of contemporary visual art practices. The gallery is inclusive of diversity and embraces the rich differences within the cultural community.

# **The Art Gallery of Sudbury**

## **School Tour & Studio Experiences**

**Tours and workshop experiences need to be booked at least one week in advance.**

### **Time allotment:**

***Tour & Studio Experiences:* \$5.00 per student (90 to 120 minutes depending on workshop)**

***Tour Only:* \$3.00 per student (45 to 60 minutes)**

### ***During Your Visit:***

Adequately supervise your students. Chaperones are responsible for monitoring and accompanying students at all times during the visit.

Please share the rules with your students and chaperones both before and during your visit.

- Do not touch works of art. A helpful guideline is to remain at least twelve inches away from any work of art.
- Do not lean drawing or note-taking materials on walls, display cases, or pedestals.
- No running, shouting or horse play.
- Indoor shoes are required during winter months.
- Non-flash cameras are allowed in the exhibition spaces for general picture taking. Close-ups of specific works are not allowed.

### ***During Your Visit: Suggested Strategies for Exploring Art***

Try the thirty-second looking activity: Have students look silently at a work of art for thirty seconds, turn away from it and have them write down or recite everything they remember, and then look at it again to see what else they can find.

Engage students in dialogue about art. Encourage them to tell you what they see, ask questions, and debate opinions. Ask open-ended questions to encourage participation and help focus student observation and discussion. Have students support their answers and opinions with evidence from the work of art.

### **Sample looking questions include:**

- What is going on in this work of art?
- What are the clues that tell you this?
- Who sees something else?
- What medium was used to create the work of art?
- If you could ask the artist one question, what would it be?

## **My First Visit**

### **J.K to Gr. 1**

This is a great introduction to the Art Gallery of Sudbury. Uncover the secrets of how an exhibition is put together, play games and do a hands on workshop relating to the current exhibition.

## **Learning to look at art**

### **Gr. 2 to 6**

This studio & tour combination allows groups to fully explore gallery 1 and 2 with a fully trained guide. A hands on workshop in our studio relating to the exhibition will follow.

## **Become Artwyze**

### **Gr. 7& 8**

This tour will help students to further understand various art forms. A fully trained guide will lead discussions with your group on the current exhibitions and allow them to experiment in our hands on workshop offered in the studio.

### **Group size:**

Minimum charge is for 10 students

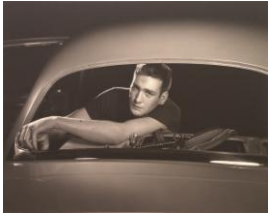
Maximum group size is for 50 students

**Note: No charge for teachers and chaperones**

To book: call Nancy at 674-3271 ex 224

or email [ngareh@artsudbury.org](mailto:ngareh@artsudbury.org)

## 2009 / 2010 Art Gallery of Sudbury Exhibition Information



**September 12 – November 1, 2009**

### **Gallery I –Karsh: Industrial Images**

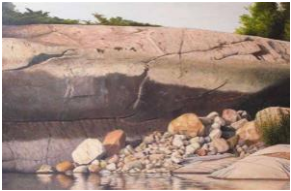
The exhibition explores the tone of Karsh's industrial and commercial portraits in relation to the work and life philosophies prevalent in post-WWII North America. It also explores consumerism, marketing and the political atmosphere in Canada during the 1950s through his portraits.



**November 12 – January 3, 2009**

### **Gallery I and II - Member's Choice 2009**

Established in 2003 as a fundraising exhibition, Member's Choice offers a unique opportunity for our membership to "curate" an exhibition of works from our permanent while supporting the Art Gallery of Sudbury.



**January 9 – February 28, 2010**

### **Gallery I and II - Ivan Wheale Retrospective**

A retrospective exhibition of the 50 year career of artist Ivan Wheale, works to be included will be loaned from several commercial and public galleries as well as private and corporate collections in Canada and the U.S.A.



**March 4 – March 28, 2010**

### **Gallery I – NOAA Juried Exhibition**

### **Gallery II – Emergence Annual Secondary School Exhibition**

**April 3 – May 16, 2010**

### **Gallery I & II – Willisville Mountain Project**

The Willisville Mountain Project is an artistic project to celebrate the four seasons of the Willisville Mountain by 45 artists who have been inspired by its natural beauty ([www.willisville.ca](http://www.willisville.ca)).



**May 29 – September 5, 2010**

### **Gallery I and II – A Terrible Beauty, Jenny Angus**

Responding to the historic environment of the Bell Mansion, artist Jenny Angus creates an installation which embraces a world of science, intrigue and fantasy. Angus is known for the use of insects in her installations to mimic decorative pattern and display, integrating this fascinating yet "terrible" imagery with found objects to create an intriguing visual story.



